



# XEC Director



Centralized monitoring and managing of user activity



Ensure compliance with policies and standards



Cost-effective

Your mobile forensic operations have never been more critical. But many mobile forensic organizations have become challenging to manage, having grown quickly over a short period of time. To make the most of your mobile forensic investment, you need to make sure you are in control of your systems and not the other way around.

XEC Director is that vital piece of the puzzle that lets you build, tailor and streamline a truly complete and effective mobile forensics system for your organization. It is a centralized management solution that lets you connect all your MSAB mobile forensic extraction tools into a single network.

Welcome to XEC Director, the most effective and powerful way to manage mobile forensics.



# MSAB

XEC Director lets you control your mobile forensic system from one central location, pushing out watch lists and new software updates, monitoring users and processes, and creating management information reports. And you can quickly send newly extracted device data from a field location to your lab or to an analyst or investigator.

XEC Director puts you in charge of a faster, more effective and much more flexible mobile forensics organization.



#### CENTRALIZED AUDITING AND LOG OF ACTIVITIES

Lets you remotely review the logs for all devices in your system to see who performed what function and when.



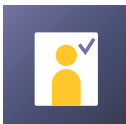
#### POWERFUL REPORTING

Gives you tailor-made reports of vital management information that let you make more informed decisions and allocate resources better. An easy way to find and follow up on KPI's.



#### REMOTE ASSISTANCE

Lets you update software, manage licenses and select automatic update routines for entire systems from one place. Also allows remote diagnostics and the possibility of assisting users experiencing difficulties.



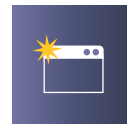
#### DETAILED USER CONTROL

Allows you to see and manage all active users in your system remotely, for example by creating, adding or deleting users, defining their individual permissions and managing their workflows, grouping them and setting standardized group permissions and so on.



#### AUTOMATIC PASSWORD UPDATES

Gives you greater ease of use since XEC Director utilizes standard Windows Domain logins, with password changes automatically carried over from Windows to XE.



#### MODERN INTERFACE

Lets you admin the system via network, using an intuitive and modern interface, in order to be more effective.

 Contact [sales@msab.com](mailto:sales@msab.com) to get started

*"Sitting with XEC in one central location, there were huge savings to be made in time and efficiency."*

*"The benefits I have found, with the kiosks, was that the workflow can be customized."*

*"It saves so much time and is so simple to use that it is essential, really."*

Simon Crawley, formerly Police Sergeant at Metropolitan Police Counter Terrorism Command, Global Project Manager MSAB

## PRODUCT HIGHLIGHTS

- Network Management Control
- Manage Use Efficiently
- Centralized Logging of Activity
- Management Information
- Central Control of Users, Licenses and Updates
- Lock Systems to Skill Levels of Users
- Control and Audit of Available Systems
- Remote Assistance to Users
- Remote Administration for IT Depts

## FEATURES

- Control Workflow Sequences
- Manage Root Directory for Extractions
- Specify Extraction Profiles
- Set Localized Time, Date, Language
- Rules for Filename Creation

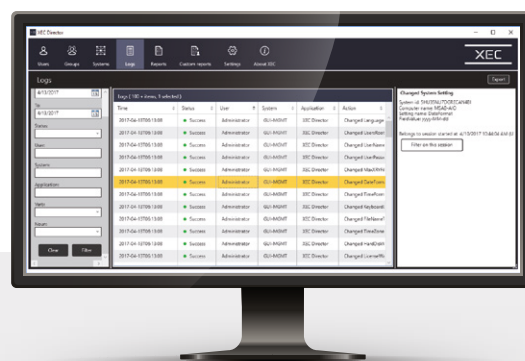
## FUNCTIONS

- Users
- Groups
- Systems
- Logs
- Settings
- Reports
- About
- Custom Reports

## XEC LICENSE INCLUDES

- Kiosk Remote Administration & Management Tool Setup Package applicable to all installations
- Manage up to 10 Kiosks remotely from one central PC for user configuration, workflow & data management
- Support, Maintenance & Version Updates for 12 months

*The detailed user control allows managers to see and manage all active users in your system remotely, for example by creating, adding or deleting users, defining their individual permissions and managing their workflows, grouping them and setting standardized group permissions.*



## System requirements

The requirements below are applicable for a smaller system with 5-10 clients. For larger system, we recommend that you contact **MSAB Professional Services** to get accurate system requirements.

	Recommended	Minimum
OS	Windows Server 2022	Windows Server 2019
CPU	4 vCPU, Intel 2.1 GHz quad cores or more	2 vCPU, Intel 2.1 GHz quad cores or more
RAM	8 GB	4 GB
HDD	50 GB	25 GB dfdf
Network	1 Gbit/s	

**Please note :** The hardware requirements are indicative and depends on several factors, like the number of connected client systems, their level of activity etc. The recommended requirements will not hold true for every environment but should rather be seen as a starting point that could be increased or decreased depending on server statistics.

## SQL Database requirements (added to XEC requirements if using the same server)

	Recommended	Minimum
Database	Microsoft SQL Server 2022*	Microsoft SQL Server Express 2017**
Reporting	SQL Server Reporting Services 2022***	SQL Server Reporting Services 2017***
CPU	2 vCPU, x64 2.0 GHz or more	1 vCPU, x64 1.4 GHz or more
RAM	4 GB	1 GB
HDD	50 GB	10 GB
Network	1 Gbit/s	

\* Enterprise, Standard, or Developer version

\*\* SQL Server Express has a limitation in 10GB storage and cannot be used for scheduled reports in XEC Director

\*\*\* The version of SQL Server must be the same as the version of SQL Server Reporting Services

# About MSAB

The Swedish company MSAB is a global leader in digital forensic technology for mobile device examination and analysis.

The flagship extraction software, XRY, has been used by authorized investigators to quickly and effectively retrieve data from mobile phones since 2003.

As an MSAB customer, you will be part of a training and support program that constantly keeps your organization updated on the latest developments in mobile forensics and MSAB solutions. MSAB also supports its customers in the development of their own mobile forensic strategies. Tailored solutions are available upon request.

Learn more about MSAB, its products, and its solutions at [MSAB.com](https://www.msab.com).

# MSAB

Trusted Partner in Digital Forensics