



➤ Discover evidence and intelligence

➤ Analyze and visualize data

➤ Create reports and share findings

The amount of data stored on mobile phones and other mobile devices is dramatically greater today than ever before. That makes the challenges of searching, filtering and analyzing that data more daunting as well. You need to quickly find what you are looking for, even in huge data sets.

Whether your mission is to gather and report intelligence, prevent crime or quickly produce solid evidence - the powerful and intuitive tools in XAMN enable the fastest possible route from having raw data to finding and reporting vital insights.

The right tools in the right hands

XAMN is designed with one goal in mind: to increase analytical efficiency - so that you can find what you are looking for quickly and easily.

A key element to successfully analyzing large volumes of data in digital forensics investigations is to understand how to process and contextualize the data, find the evidence it contains and then produce a comprehensive report. To do that, you need smart analytics – to search, filter, analyze and find the data quickly and at scale. To cross-examine data from multiple devices and individuals. Then to share with those who need to know.

No digital forensic analysis tool does that better today than XAMN.

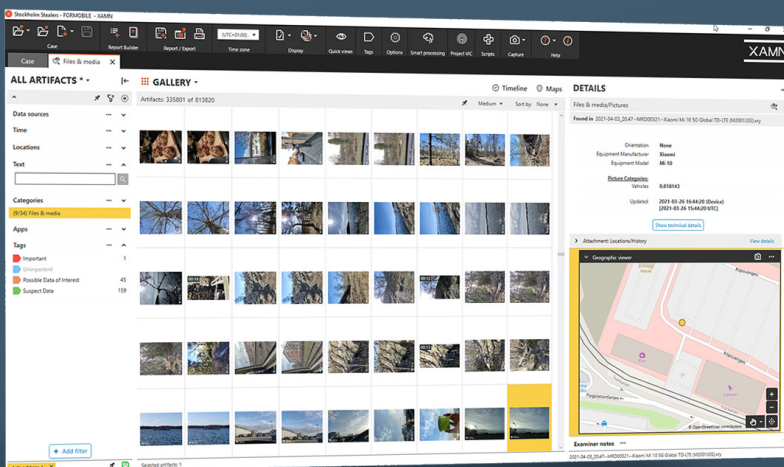
There are two versions of MSAB Analyze - XAMN:

XAMN Pro

An intuitive yet extremely powerful review and analysis tool that provides unprecedented search, linking, and filtering options that enables investigators, analysts and digital examiners to quickly discover evidence in mobile data. XAMN Pro simplifies and speeds up your work and is the tool of choice for anything from review of pictures and messages to advanced hex carving. XAMN Pro also includes extensive options for reporting and exports.

XAMN Viewer

A free and easy-to-use tool that enables users of all levels in your organization to access, perform basic review, and create reports for mobile device data.



XAMN enables you to display and sort through your data fast and efficiently.

Discover critical evidence and intelligence faster

Leverage XAMN's unprecedented ease-of-use and review capabilities for quick results

Investigators, analysts, and forensic specialists are often tasked with sifting through thousands – even hundreds of thousands – of messages and pictures as well as gigabytes of other data.

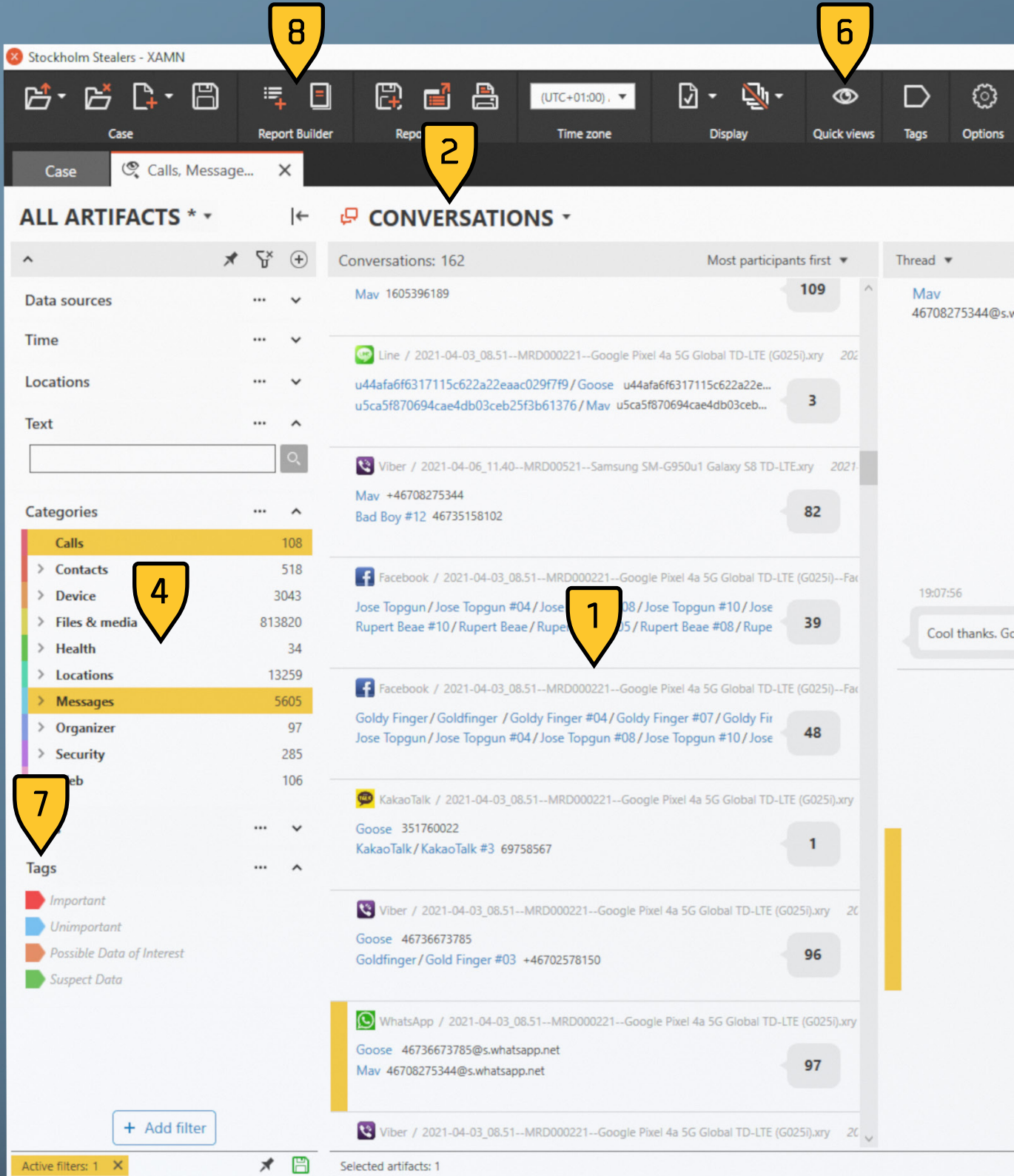
XAMN Pro is designed with one goal in mind: To increase analytical efficiency – so that you can find what you are looking for quickly and easily.

XAMN Pro is an extremely powerful tool for analysis and reporting. Load your mobile device extractions and use a wide and intuitive range of filter, search, and viewing options to get past any redundant data and quickly find what you are looking for. After that, use one of many different options to visualize and report your findings.

You can load many different extractions into XAMN at the same time. This enables you to simultaneously search through and compare data from logical and physical extractions of mobile devices, memory cards, SIM Cards as well as XRY Camera and XRY Cloud files.

XAMN Pro supports analysis of extractions from mobile phones, drones, wearable tech, GPS devices, vehicle information systems, warrant returns, and more.

- ▶ Ingest and analyze data from MSAB's XRY, third-party extraction tools, call data records (CDR), warrant returns from online service providers, and more
- ▶ Narrow down your search by filtering on content category, text, time, phone number, file size, geography, deleted data, text patterns, Project VIC, and more
- ▶ Optimize your workspace with custom quick views and multi-monitor support
- ▶ Link phone numbers, chat aliases, and other key identifiers to Persons
- ▶ Use XAMN's AI-based content recognition filter to automatically classify images as weapons, drugs, people and other key categories – a tremendous time-saver in many cases
- ▶ Review artifacts using built-in viewers for PList, XML, SQLite files, and more



1. Artifacts pane

The artifacts pane displays your filtered results and updates in real-time as you add or remove active filters.

2. Analytical views

Investigate your filtered results using analytical views optimized for different types of artifacts.

Gallery: Pictures and media file

Conversations: Chats, messages and calls

Connection: Relationships between persons

Geographic: Artifacts with geolocation attributes

List, Column and File Tree: All types

3. Timeline & Maps

You can combine any analytical view with an intuitive timeline that shows activity based on time and a Maps view that shows artifacts having geolocation attributes.

4. Filters pane

XAMN provides a wide range of useful filters allowing you to narrow down your search based on criteria relevant to your investigation. In addition to the default filters, many more are easily accessed from the Filters menu. Artifacts are color-coded throughout XAMN, to make it easy for you to distinguish between content types such as pictures, messages and calls.

The screenshot displays the XAMN user interface. At the top, there is a navigation bar with icons for Smart processing, Project VIC, Scripts, and Help. A yellow shield with the number '3' is overlaid on the Scripts icon. Below the navigation bar, the main interface is divided into two panes. The left pane shows a WhatsApp chat history with messages from 'Goose' (46736673785@s.whatsapp.net). A yellow shield with the number '5' is overlaid on the first message, which contains a photo of a bus stop. The right pane shows the 'DETAILS' view for the selected message. It includes a 'Messages/Chat' header, a 'Found in' path, and a 'WhatsApp' section with the following information:

Client	Phone
To: Ma	46736673785@s.whatsapp.net
WhatsApp ID	46736673785
Time	2021-03-26 18:59:36 (Network) [2021-03-26 17:59:36 UTC]
Direction	Outgoing
Status	Delivered (Read)
Related URL	https://mmg.whatsapp.net/d/f/AkIVMn80RJsx0lhJx9oGIPsSyy_J9Vj9EsYwiJbkgFPH.enc

Below the details, there is an attachment viewer for 'IMG-20210326-WA0007.jpg' showing a photo of a wooden bench with 'GOOSE' written on it. The file name and path are displayed below the image. A yellow shield with the number '5' is overlaid on the WhatsApp ID field in the details pane.

5. Details pane

The details pane shows you detailed information about a selected artifact, like the selected message above. Depending on the type of artifact, XAMN can offer you ways to pivot your search to find related artifacts. For example, you can easily create a new filter to look for artifacts created in the same timeframe or in the same geographic area.

6. Quick views

Quick views are sets of saved filters. XAMN provides a number of useful Quick Views out-of-the-box that allows you to instantly look at e.g. only calls, messages, deleted data or artifacts created in the last 30 days. Additionally, you can easily create your own custom Quick Views that can help you greatly speed up your investigations.

7. Tags

To keep your findings organized as you review data, you use Tags. Tags are bookmarks that can be applied to a single or multiple artifacts in one go. XAMN provides two default tags - Important and Unimportant. In addition, you can freely create as many custom tags as you like.

8. Reports

After completing your analysis, a common step is to create a report with your findings. XAMN allows you to create reports in two ways - with intuitive drag-and-drop using the Report Builder or using the Report/Export option.

Analyze and visualize your findings in new, powerful ways

Quickly get an understanding of your data by examining it from different perspectives.

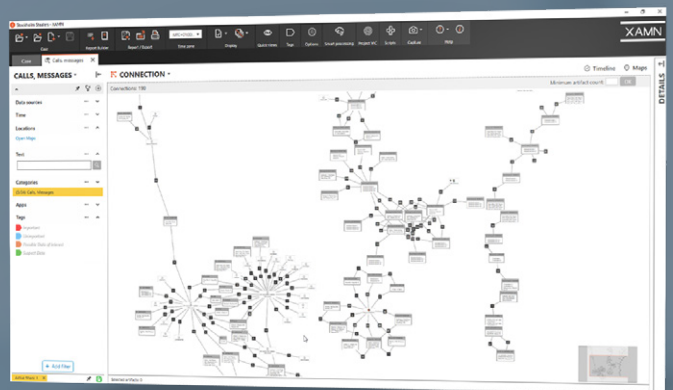
XAMN Pro provides an immediate overview of the connections between different persons of interest, and helps you discover additional individuals that may be relevant to your investigation.

XAMN Pro enables you to discover and investigate data from different perspectives:

- The **Geographic** and **Maps** views lets you navigate data by location to see where calls were made or received, pictures taken, and more.
- The **Conversations** view lets you track chat threads from popular chat apps.
- The incredibly powerful **Connection** view allows you to discover and investigate the interactions between different device owners and accounts.

XAMN Pro also provides a built-in advanced hex carving tool for experts, designed to help you dig deeply into undecoded or fragmented data in order to bookmark, reconstruct and validate crucial pieces of information that would otherwise be unavailable. Very importantly, XAMN Pro makes it easier to defend the validity of your findings.

- See entire chat threads like they are displayed in the apps in the Conversations view
- Explore messages and other interactions between persons in the Connection view
- Review findings with geo data in the Maps view and combine it with a Timeline
- View the source details of an artifact or deep-dive in the Hex view with carving support
- Explore contents of SQLite databases and map findings to reportable artifacts



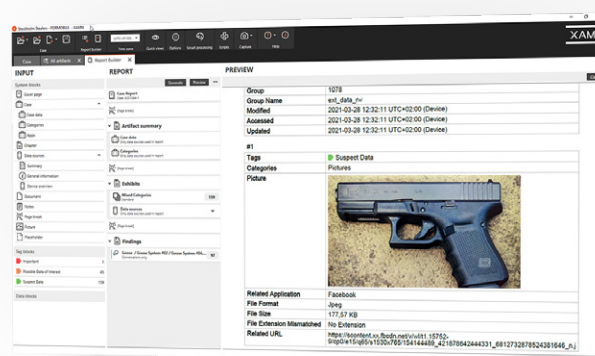
The Connection view is one of many comprehensive visualisation options that allow you to understand, organize and explore the data you're investigating.

Share your findings with streamlined reporting

Save time and share your findings with precision using XAMN Pro's Report Builder and extensive export options.

Clear and understandable reports are vital to success, and creating them is one of the most important steps of your digital investigation. XAMN's Report Builder allows you to, with simple drag-and-drop technology, quickly create reports for use in your department or for presentation in court. You can easily tailor the layout and structure to fit different stakeholders and have complete control over ordering and the layout used in different sections of the report.

In addition to Report Builder, XAMN Pro provides extensive functionality to export data in a wide range of formats, such as PDF, Word, Excel, XML, GPX, VICS, and more. You can also create a subset of an XRY file that can be shared with e.g. legal advisors and prosecutors and be interactively reviewed using XAMN Viewer.



XAMN's Report Builder lets you construct reports though an intuitive drag-and-drop interface, and save the resulting structure as a template for future use.

- Quickly include findings in your report by tagging artifacts of interest
- Easily arrange your findings using drag-and-drop
- Include external material in your report, such as SOP descriptions, photos, and protocols
- Create and make use of templates for an even more efficient process

Contact sales@msab.com to get started!

About MSAB

The Swedish company MSAB is a global leader in digital forensic technology for mobile device examination and analysis.

The flagship extraction software, XRY, has been used by authorized investigators to quickly and effectively retrieve data from mobile phones since 2003.

As an MSAB customer, you will be part of a training and support program that constantly keeps your organization updated on the latest developments in mobile forensics and MSAB solutions. MSAB also supports its customers in the development of their own mobile forensic strategies. Tailored solutions are available upon request.

Learn more about MSAB, its products, and its solutions at [MSAB.com](https://www.msab.com).

MSAB

Trusted Partner in Digital Forensics