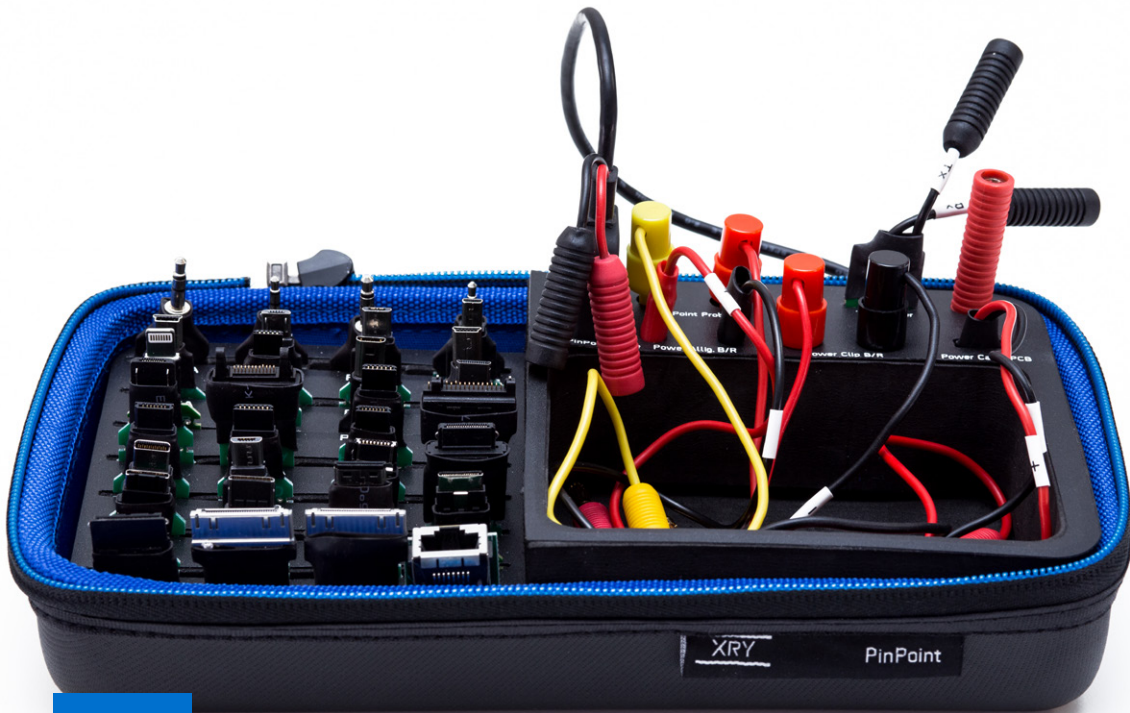


XRY

PinPoint



XRY PinPoint - the tool for non-standard mobile device support

PinPoint is not just another Chinese chipset solution. It is a totally integrated solution for undocumented mobile devices, typically manufactured in Eastern Asia, with an advanced solution comprised of compact hardware and powerful software. Fully integrated, it uses the familiar and easy to use interface of the XRY application.

+ AUTO DETECT CHIPSET

+ ALL CORE CHIPSETS SUPPORTED

+ LIGHTWEIGHT AND EASY TO USE

DEDICATED TOOL FOR DIFFICULT DEVICES

XRY PinPoint enables users to extract and decode data from non-standard mobile devices. Typically these are cheaper clone phones where the forensic challenge is the connector pin-outs, which vary and may not even be known. PinPoint is able to automatically detect the pin-out configuration, in order to communicate with the mobile device.

CONSTANTLY IMPROVING SUPPORT

PinPoint is fully integrated with XRY, allowing the user to take advantage of its powerful decoding functionality and can be installed on any computer running XRY Logical or Physical. The extra support for physical extraction of non-standard devices is enabled upon activation of the PinPoint module. PinPoint is powered by a software solution which is regularly updated in XRY, which means it improves over time. Thus avoiding the perils of separate black box solutions with frozen firmware that goes out of date as soon as they are purchased.

PinPoint supports devices with chipsets from:

- » MediaTek
- » Spreadtrum
- » CoolSAND
- » Infineon

In addition to the thousands of verified device profiles in XRY, there are also additional generic profiles that allow the solution to work with hundreds more non-standard devices. The hardware is compact and is well-suited to work in the field.

PinPoint is developed and delivered by MSAB to be the most user friendly and capable non-standard mobile device solution. This addition to MSAB's suite of forensic tools operates on a separate license component alongside MSAB Office.

REQUIREMENTS

PC: Intel 1.6 GHz dual-core, 2GB RAM, 2 USB-ports

Operating system: Windows 7, 8 or 10 (64Bit only)

Display requirements: 1366 x 768 resolution minimum

Additional requirements: Microsoft .NET Framework 4.5



Contact sales@msab.com to request a quote!

PRODUCT HIGHLIGHTS

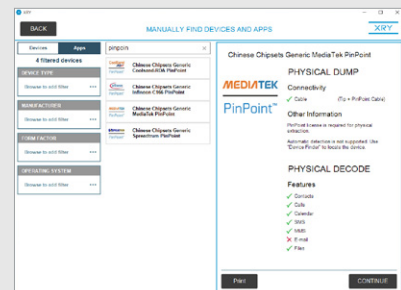
- » Automatic Pin Detection
- » Logical and Physical Extraction
- » Report Generation
- » Binary File Export
- » Generic Profiles for Maximum Support

DATA DECODING

- » Call Logs
- » Contacts
- » SMS/MMS
- » Media Files
- » Calendar
- » Tasks
- » Notes
- » Deleted Data
- » Chip ID
- » File System

INCLUDED IN THE PINPOINT PACKAGE

- » Interface Cable
- » Binder
- » Adapter Kit (33 Tips)
- » Power Cable Alligator
- » Power Cable Clips
- » Power Cable PCB
- » Voltage Reduction Adaptor
- » Pouch



XRY PinPoint is updated with each new release of the XRY software